

PARTS LIST				
ITEM	QTY	PART NUMBER	MATERIAL	DESCRIPTION
1	1	AXLE	STEEL 1020	
2	1	BUSHING	BRASS	OILLESS
3	1	COLLAR	ALUMINUM	
4	1	HUB	ALUMINUM	
5	2	RIM	ALUMINUM	.12" UNIFORM THICKNESS
6	2	WASHER	STAINLESS STEEL	Ø2.12" OD X Ø1.00" ID X .18" THICK
7	1	WHEEL	HARD BLACK RUBBER	
8	6	RIVET	STAINLESS STEEL	Ø.31 X 1.00" INSIDE LENGTH
9	1	SPRING PIN	MILD STEEL	ANSI B18.8.2 - 1/4 X 1 7/8, PSS

GENERAL NOTES:
 -RIVETS EQUALLY SPACED
 -ALL FILLETS R.125" UNLESS OTHERWISE NOTED
 -ALL CHAMFERS .06 X 45° UNLESS OTHERWISE NOTED
 -ALL FILLETS ON PART "RIM" HAVE R.0625"

NICHOLAS RODRIGUEZ
 DRAFTING AND DESIGN
 (707) 251-2948
 RODRIGUEZNICHOLAS@GMAIL.COM
 WWW.DDGT.NET/18100074005/INDIVIDUALIZE

TOLERANCES UNLESS SPECIFIED:
 DECIMAL INCHES:
 X = ±.020
 XX = ±.010
 XXX = ±.005
 FRACTIONAL ±1/64"
 ANGLES ±1 DEGREE
 SURFACES

COURSE: DDGT121
 INVENTOR DRAWING NAME
 WHEEL ASSEMBLY
 FIG #: 11-55
 DRAFTER: N. RODRIGUEZ
 DATE: 1/31/2021
 SCALE: AS NOTED
 PAGE #: 1 OF 2

EXPLODED ASSEMBLY VIEW
 SCALE 1 / 2

LEGEND:
 Ø DIAMETER
 R RADIUS
 ° DEGREES

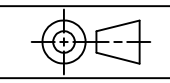
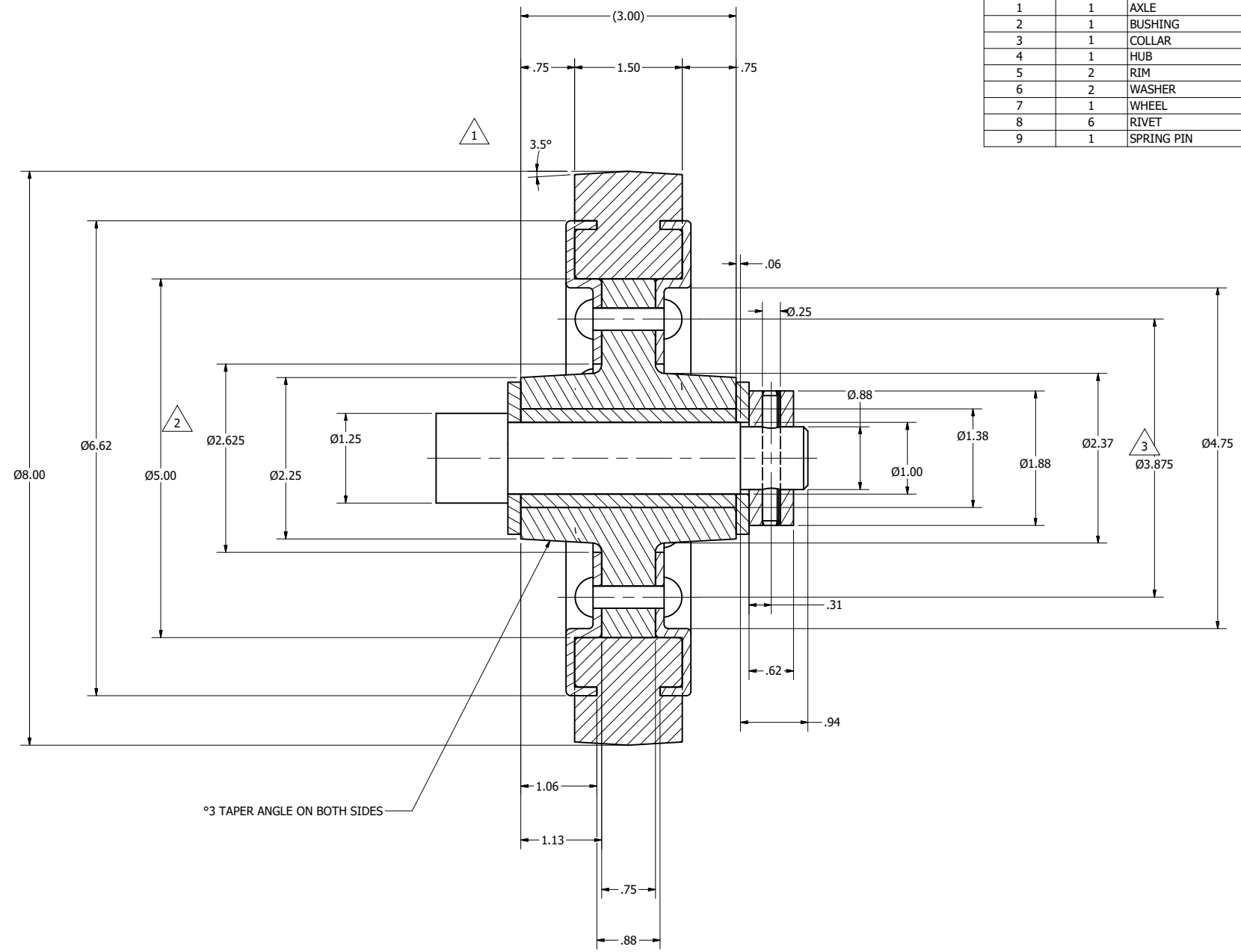
REV	DATE	DESCRIPTION	APPROVED	PAGE #
3	2/13/2021	RIVET PATTERN CHANGED FROM Ø3.50" TO Ø3.875"	G. STROMMEN	2
2	2/13/2021	INSIDE DIAMETER ON RIM CHANGED FROM Ø2.8" TO Ø2.625"	G. STROMMEN	2
1	2/13/2021	ANGLE ON WHEEL CHANGED FROM 5° TO 3.5°	G. STROMMEN	2

REVISION HISTORY

PARTS LIST		
ITEM	QTY	PART NUMBER
1	1	AXLE
2	1	BUSHING
3	1	COLLAR
4	1	HUB
5	2	RIM
6	2	WASHER
7	1	WHEEL
8	6	RIVET
9	1	SPRING PIN



GENERAL NOTES:
 -RIVETS EQUALLY SPACED
 -ALL FILLETS R.125" UNLESS OTHERWISE NOTED
 -ALL CHAMFERS .06 X 45° UNLESS OTHERWISE NOTED
 -ALL FILLETS ON PART "RIM" HAVE R.0625"



TOLERANCES UNLESS SPECIFIED:
 DECIMAL INCHES:
 X = ±.020
 XX = ±.010
 XXX = ±.005
 FRACTIONAL ±1/64"
 ANGLES ±1 DEGREE
 SURFACES $\sqrt{\quad}$

COURSE: DDGT121

INVENTOR DRAWING NAME: WHEEL ASSEMBLY

FIG #: 11-55

DRAFTER: N. RODRIGUEZ

DATE: 1/31/2021

SCALE: AS NOTED

PAGE #: 2 OF 2

REV	DESCRIPTION
3	RIVET PATTERN CHANGED FROM Ø3.50" TO Ø3.875"
2	INSIDE DIAMETER ON RIM CHANGED FROM Ø2.8" TO Ø2.625"
1	ANGLE ON WHEEL CHANGED FROM 5° TO 3.5°
REV	DESCRIPTION
REVISION HISTORY	